

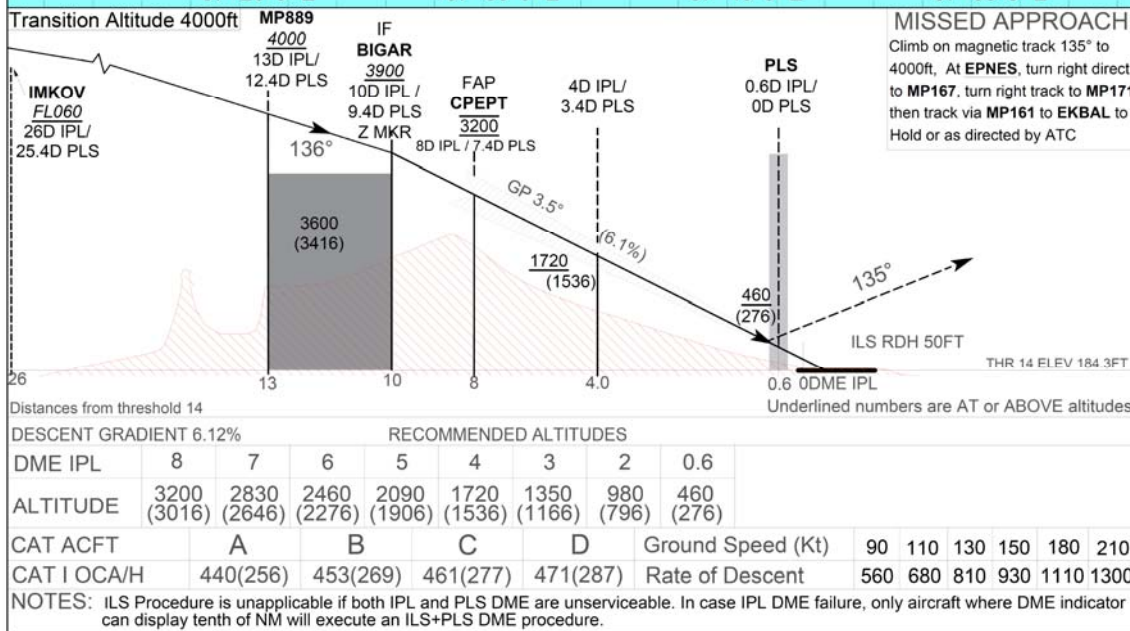
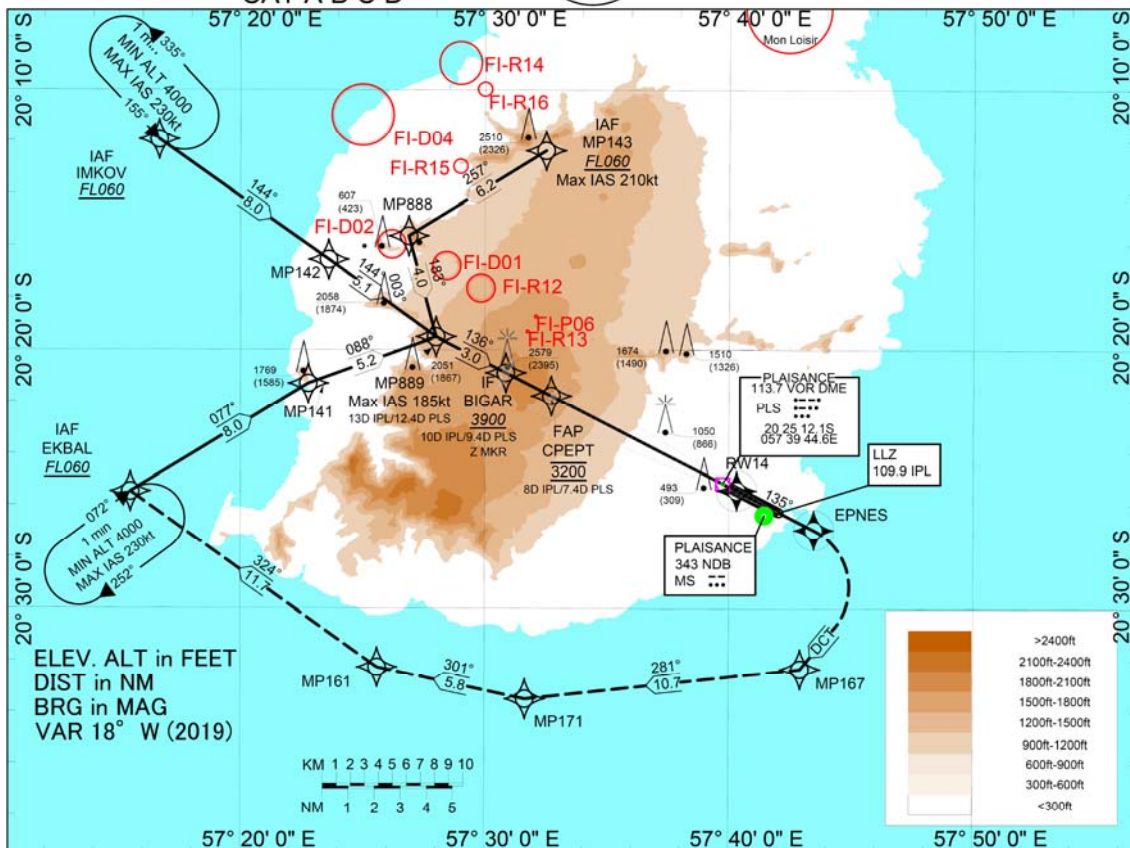
INSTRUMENT APPROACH CHART - ICAO

AD ELEV 184.3 FT
HEIGHT RELATED TO THR RWY 14 ELEV 184.3 FT
CAT A B C D



OCA 129.3
APP 119.1
TWR 118.1
ATIS 126.2

MAURITIUS
Sir Seewoosagur Ramgoolam International Airport (FIMP)
RNP1 to ILS Z RWY 14



Changes: RW14 is a Fly over. MNM Holding altitude at EKBAL is 4000ft, CPEPT is a Flyby, BIGAR is at or above 3900ft
Inclusion of ZMKR at BIGAR

RNP 1 to ILS Z RWY14
TABULAR DESCRIPTION

Serial number	Path Descriptor	WPT Identifier	Fly-over	Mag Var	°M	°T	Distance (NM)	Turn direction	Altitude	Speed (kts)	VPA/TCH	NAV Spec
10	IF	MP143	-	-18.38	-	-	-		+FL060	-210		RNP 1
20	TF	MP888	N	-18.38	257	238.36	6.20			-210		RNP 1
30	TF	MP889	N	-18.38	183	164.78	4.00			-185		RNP 1
40	TF	BIGAR	N	-18.38	136	117.13	3.02		+3900	-185		RNP 1
10	IF	IMKOV	-	-18.38	-	-	-		+FL060			RNP 1
20	TF	MP142	N	-18.38	144	125.19	8.00					RNP 1
30	TF	MP889	N	-18.38	144	125.74	5.06					RNP 1
40	TF	BIGAR	N	-18.38	136	117.13	3.02		+3900			RNP 1
10	IF	EKBAL	-	-18.38	-	-	-		+FL060			RNP 1
20	TF	MP141	N	-18.38	077	058.71	8.00					RNP 1
30	TF	MP889	N	-18.38	088	070.03	5.23			-185		RNP 1
40	TF	BIGAR	N	-18.38	136	117.13	3.02		+3900	-185		RNP 1
10	IF	BIGAR	-	-18.38	-	-	-		+3900	-185		RNP APCH
20	TF	CPEPT	N	-18.38	136	117.13	1.98		@3200		-3.5/50	RNP APCH
30	TF	RW14	Y	-18.38	136	117.12	8.01				-3.5/50	RNP APCH
40	TF	EPNES	Y	-18.38	135	116.91	3.35			-230		RNAV1
50	DF	MP167	N	-18.38	-	-	-	R				RNAV1
60	TF	MP171	N	-18.38	281	263.71	10.7					RNAV1
70	TF	MP161	N	-18.38	301	282.19	5.81					RNAV1
80	TF	EKBAL	N	-18.38	324	305.51	11.65		+FL060			RNAV1
90	HM	EKBAL	N	-18.38	72	53.54	-	R	+4000	-230		RNAV1

Changes: BIGAR, CPEPT AND RW14 RNP value - RNP APCH Altitude at BIGAR +3900ft and CPEPT @3200ft
CPEPT is a Flyby and RW14 is a Flyover Holding at EKBAL +4000ft