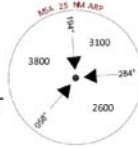
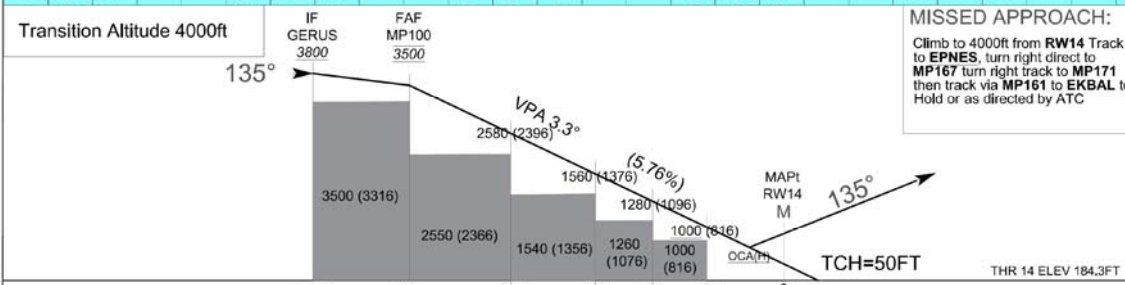
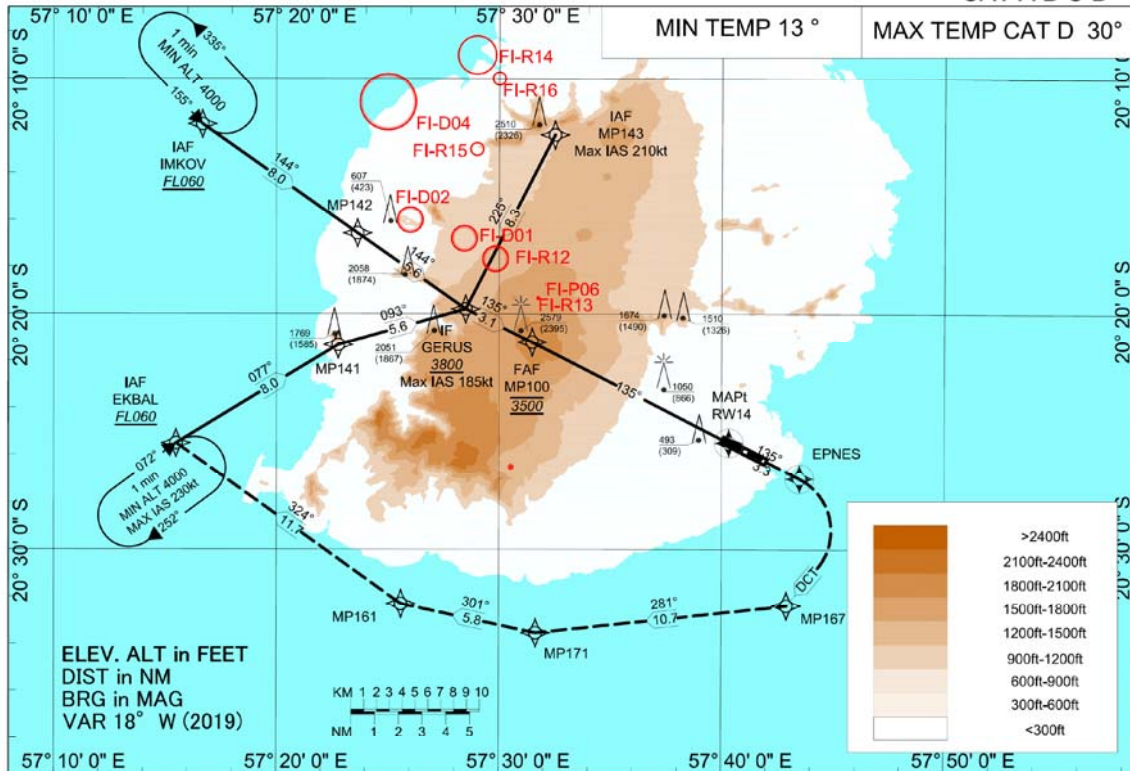


INSTRUMENT APPROACH CHART - ICAO AD ELEV 184.3FT
HEIGHT RELATED TO THR RWY 14 ELEV 184.3FT



OCA 129.3
APP 119.1
TWR 118.1
ATIS 126.2

MAURITIUS
Sir Seewoosagur Ramgoolam International Airport (FIMP)
RNP Z RWY 14
CAT A B C D



Distances from threshold 14: 12.4, 9.3, 6.7, 3.8, 3.0, 2.2, 0. Underlined numbers are AT or ABOVE altitudes

DESCENT GRADIENT 5.76%								RECOMMENDED ALTITUDES							
THR RWY 14	9.3	8	6.7	5	3.8	3	2.2								
ALTITUDE	3500 (3316)	3040 (2856)	2580 (2396)	1980 (1796)	1560 (1376)	1280 (1096)	1000 (816)								
CAT ACFT	A	B	C	D	Ground Speed (Kt)				90	110	130	150	180	210	
LNAV/VNAV	690(506)	710(526)	720(536)	730(546)	Rate of Descent				530	640	760	870	1050	1220	
LNAV	870(686)	870(686)	870(686)	870(686)											

NOTES: Due to the PAPI set at 3.5° for ILS, at times there can be a mismatch for the aircraft on the RNP Z APCH RWY14 since it is a BARO VNAV.

Changes: Underlined numbers are AT or ABOVE altitudes concern the profile.

RNP Z RWY14
TABULAR DESCRIPTION

Serial number	Path Descriptor	WPT Identifier	Fly-over	Mag Var	°M	°T	Distance (NM)	Turn direction	Altitude	Speed (kts)	VPAT/CH	NAV Spec
10	IF	MP143	-	-18.38	-	-	-			-210		RNAV1
20	TF	GERUS	N	-18.38	225	207.01	8.28		+3800	-185		RNAV1
10	IF	IMKOV	-	-18.38	-	-	-		+FL060			RNAV1
20	TF	MP142	N	-18.38	144	125.19	8.00					RNAV1
30	TF	GERUS	N	-18.38	144	125.15	5.59		+3800	-185		RNAV1
10	IF	EKBAL	-	-18.38	-	-	-		+FL060			RNAV1
20	TF	MP141	N	-18.38	77	58.71	8.00					RNAV1
30	TF	GERUS	N	-18.38	93	74.22	5.59		+3800	-185		RNAV1
10	IF	GERUS	-	-18.38	-	-	-		+3800	-185		RNP APCH
20	TF	MP100	N	-18.38	135	116.74	3.14		@3500			RNP APCH
30	TF	RW14	Y	-18.38	135	117.12	9.33				-3.3/50	RNP APCH
40	TF	EPNES	Y	-18.38	135	116.91	3.35			-230		RNAV1
50	DF	MP167	N	-18.38	-	-	-	R				RNAV1
60	TF	MP171	N	-18.38	281	263.71	10.7					RNAV1
70	TF	MP161	N	-18.38	301	282.19	5.81					RNAV1
80	TF	EKBAL	N	-18.38	324	305.51	11.65		+FL060			RNAV1
90	HM	EKBAL	N	-18.38	72	53.54	-	R	+4000	-230		RNAV1

Change: NAV spec at GERUS, MP100 and RW14 is RNP APCH

Holding altitude at EKBAL is above 4000ft