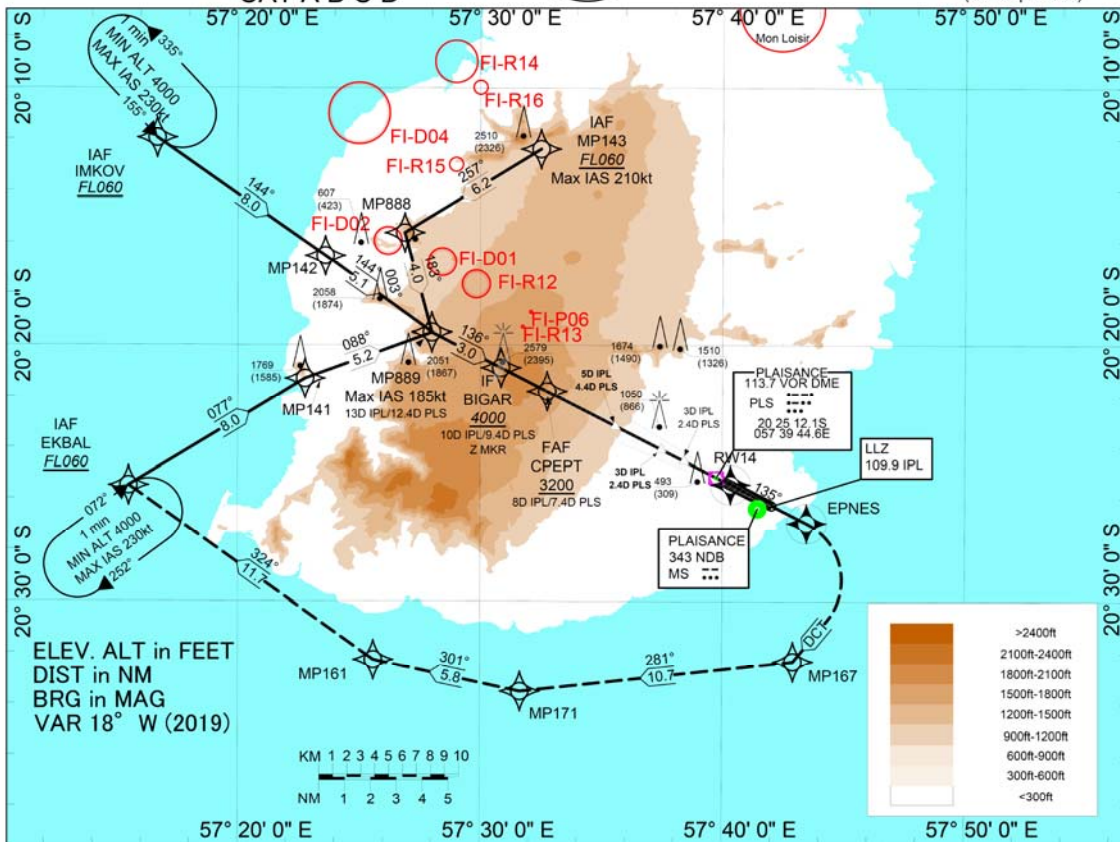


INSTRUMENT APPROACH CHART - ICAO AD ELEV 184.3FT
HEIGHT RELATED TO THR RWY 14 ELEV 184.3FT
CAT A B C D

OCA 129.3
APP 119.1
TWR 118.1
ATIS 126.2

MAURITIUS
Sir Seewoosagur Ramgoolam International Airport (FIMP)
RNP1 to LLZ DME IPL Z RWY14
(GP inoperative)



NOTES: 1. LLZ Procedure is inapplicable if both IPL and PLS DME are unserviceable. In case IPL DME failure only, aircraft where DME indicator can display tenth of NM will execute and LLZ+PLS DME procedure.
2. VM (C) PROHIBITED NE OF RWY 14/32.

Changes: chart title RNP1 to LLZ DME IPL Z RWY14, BIGAR 4000, Underlined numbers at or ABOVE altitudes concern profile
Inclusion of ZMKR at BIGAR

TABULAR DESCRIPTION

Serial number	Path Descriptor	WPT Identifier	Fly-over	Mag Var	°M	°T	Distance (NM)	Turn direction	Altitude	Speed (kts)	VPA/TCH	NAV Spec
10	IF	MP143	-	-18.38	-	-	-		+FL060	-210		RNP 1
20	TF	MP888	N	-18.38	257	238.36	6.20			-210		RNP 1
30	TF	MP889	N	-18.38	183	164.78	4.00			-185		RNP 1
40	TF	BIGAR	N	-18.38	136	117.13	3.02		+4000	-185		RNP 1
10	IF	IMKOV	-	-18.38	-	-	-		+FL060			RNP 1
20	TF	MP142	N	-18.38	144	125.19	8.00					RNP 1
30	TF	MP889	N	-18.38	144	125.74	5.06					RNP 1
40	TF	BIGAR	N	-18.38	136	117.13	3.02		+4000			RNP 1
10	IF	EKBAL	-	-18.38	-	-	-		+FL060			RNP 1
20	TF	MP141	N	-18.38	077	058.71	8.00					RNP 1
30	TF	MP889	N	-18.38	088	070.03	5.23			-185		RNP 1
40	TF	BIGAR	N	-18.38	136	117.13	3.02		+4000	-185		RNP 1
10	IF	BIGAR	-	-18.38	-	-	-		+4000	-185		RNP APCH
20	TF	CPEPT	N	-18.38	136	117.13	1.98		+3200		-3.5/50	RNP APCH
30	TF	RW14	Y	-18.38	136	117.12	8.01				-3.5/50	RNP APCH
40	TF	EPNES	Y	-18.38	135	116.91	3.35			-230		RNAV1
50	DF	MP167	N	-18.38	-	-	-	R				RNAV1
60	TF	MP171	N	-18.38	281	263.71	10.7					RNAV1
70	TF	MP161	N	-18.38	301	282.19	5.81					RNAV1
80	TF	EKBAL	N	-18.38	324	305.51	11.65		+FL060			RNAV1
90	HM	EKBAL	N	-18.38	72	53.54	-	R	+4000	-230		RNAV1

Change: NAV SPEC VALUE for BIGAR, CPEPT and RW14 is RNP APCH
BIGAR +4000, CPEPT +3200 Holding altitude at EKBAL is above 4000ft