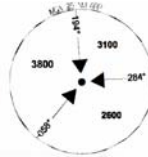
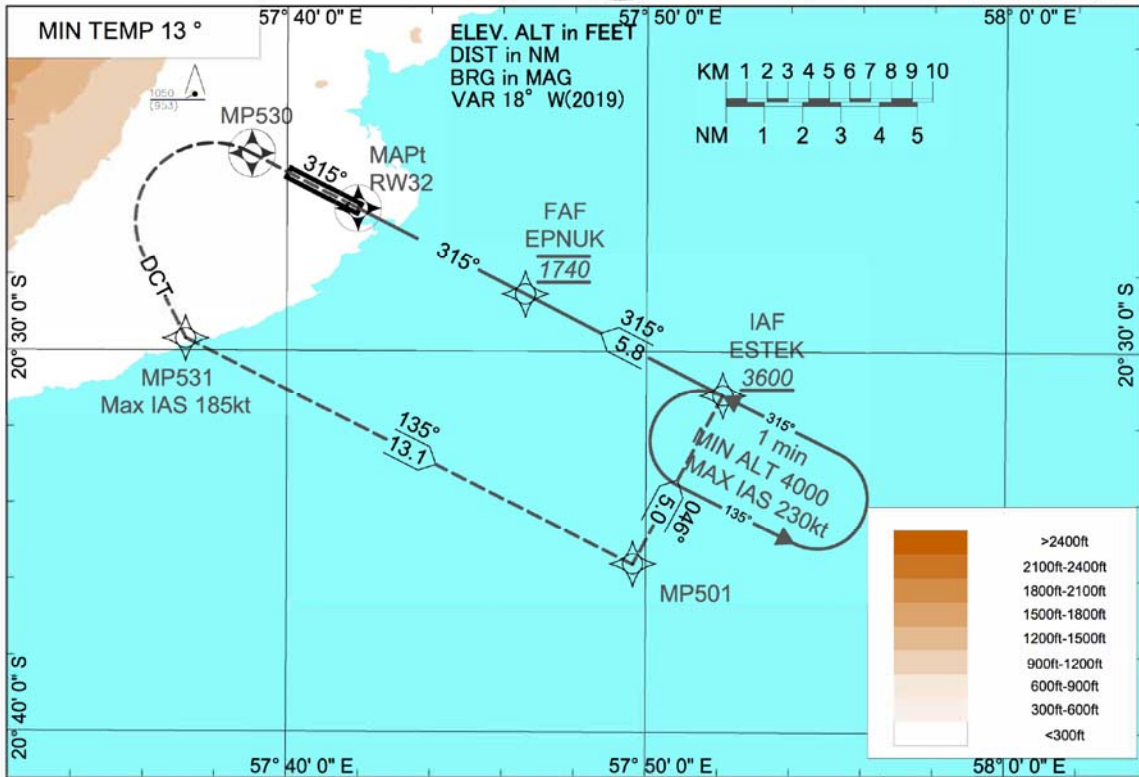


INSTRUMENT APPROACH CHART - ICAO
AD ELEV 184.3FT
HEIGHT RELATED TO
THR RWY 32 ELEV 97.04FT

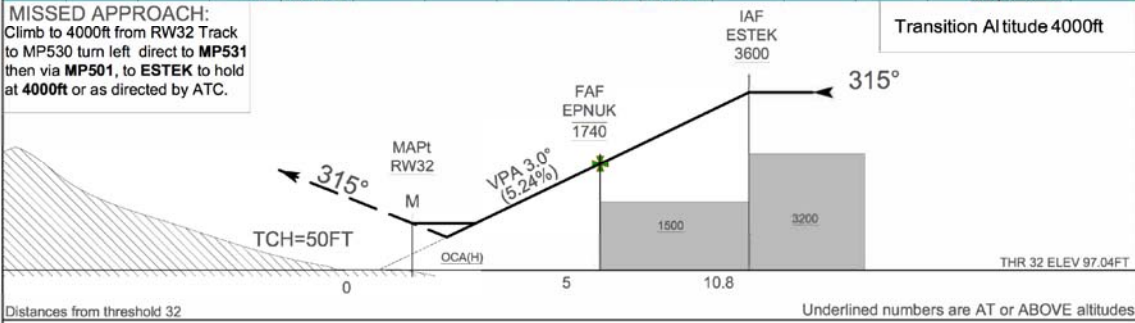


OCA 129.3
APP 119.1
TWR 118.1
ATIS 126.2

MAURITIUS
Sir Seewoosagur Ramgoolam
International Airport (FIMP)
RNP Z RWY 32
CAT A B C D



MISSED APPROACH:
Climb to 4000ft from RW32 Track to MP530 turn left direct to MP531 then via MP501, to ESTEK to hold at 4000ft or as directed by ATC.



Distances from threshold 32

Underlined numbers are AT or ABOVE altitudes

DESCENT GRADIENT 5.24%		RECOMMENDED ALTITUDES											
THR RWY 32	2	3	4	5	6	7	8	9	10	10.8			
ALTITUDE	790 (693)	1110 (1013)	1420 (1323)	1740 (1643)	2060 (1963)	2380 (2283)	2700 (2603)	3010 (2913)	3330 (3233)	3600 (3503)			
CAT	A	B	C	D	Ground Speed (Kt)			90	110	130	150	180	210
LNAV/VNAV	560 (463)	570 (473)	590(493)	620 (523)	Rate of Descent			480	580	690	800	960	1110
LNAV	690 (593)	690 (593)	690 (593)	690 (593)									

NOTES:

Changes: Title RNP Z RWY32, altitude at ESTEK 3600.

RNP Z RWY32
TABULAR DESCRIPTION

Serial number	Path Descriptor	WPT Identifier	Fly-over	Mag Var	°M	°T	Distance (NM)	Turn direction	Altitude	Speed (kts)	VPA/TCH	NAV Spec
10	IF	ESTEK	-	-18.38	-	-	-		+3600			RNP APCH
20	TF	EPNUK	N	-18.38	315	296.99	5.8		@1740			RNP APCH
30	TF	RW32	Y	-18.38	315	297.02	5.0				-3.0/50	RNP APCH
40	TF	MP530	Y	18.38	315	297.12	1.98					RNP APCH
50	DF	MP531	N	-18.38	-	-	-			-185		RNAV1
60	TF	MP501	N	-18.38	135	116.80	13.1					RNAV1
70	TF	ESTEK	N	-18.38	46	27.83	5.0	L				RNAV1
80	HM	ESTEK	N	-18.38	315	296.99		L	+4000	-230		RNAV1

Change: NAV Spec at ESTEK, EPNUK, RW32 and MP530 is RNP APCH

Altitude at ESTEK +3600 Holding altitude at ESTEK is above 4000ft