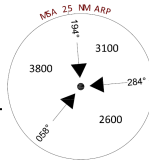
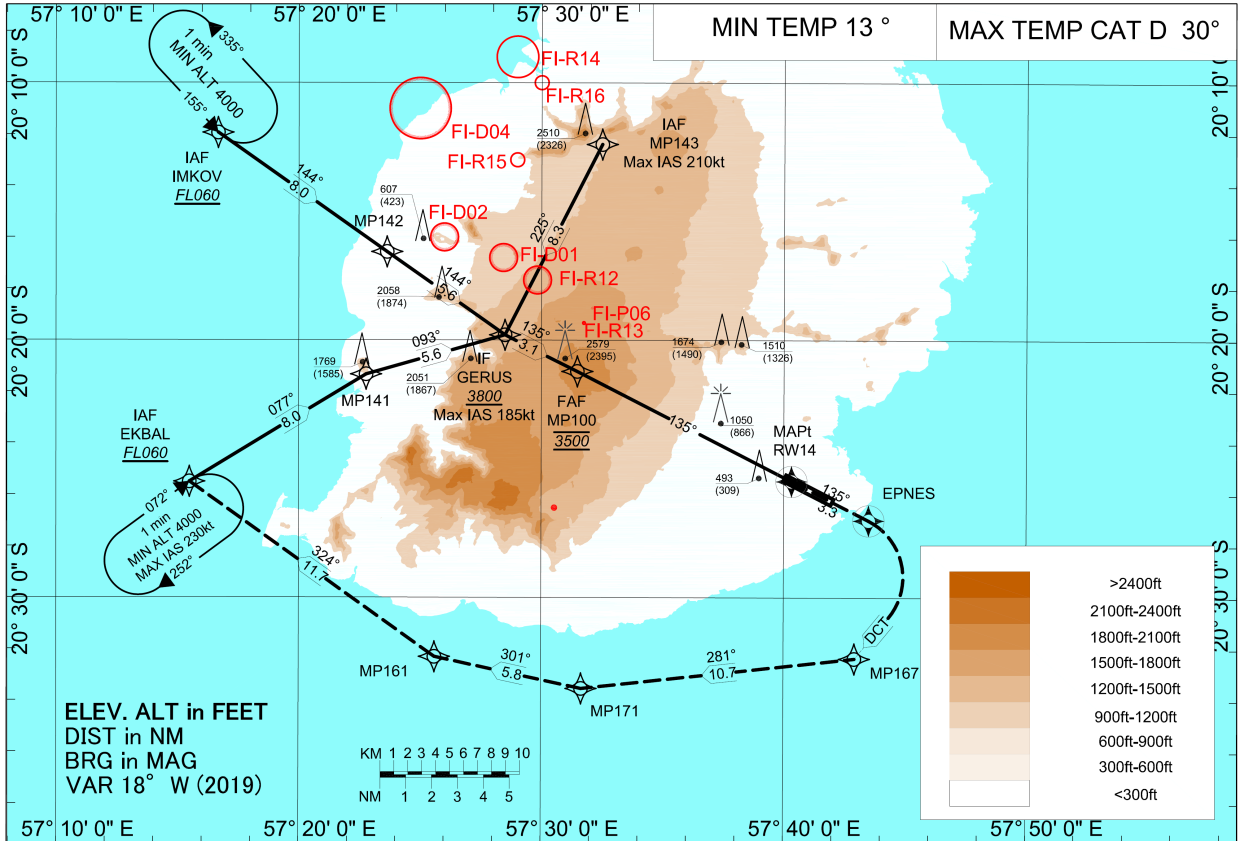


INSTRUMENT APPROACH CHART - ICAO
AD ELEV 184.3FT
HEIGHT RELATED TO
THR RWY 14 ELEV 184.3FT



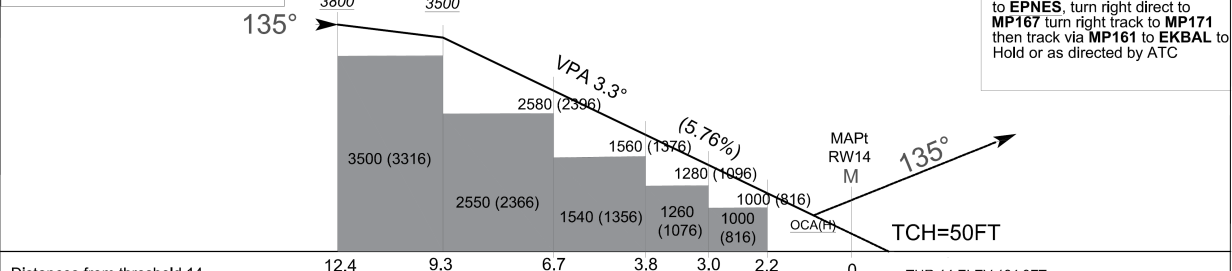
OCA 129.3
APP 119.1
TWR 118.1
ATIS 126.2

MAURITIUS
Sir Seewoosagur Ramgoolam
International Airport (FIMP)
RNP Z RWY 14
CAT A B C D



Transition Altitude 4000ft
ELEV. ALT in FEET
DIST in NM
BRG in MAG
VAR 18° W (2019)

MISSED APPROACH:
Climb to 4000ft from RW14 Track to EPNES, turn right direct to MP167 turn right track to MP171 then track via MP161 to EKBAL to Hold or as directed by ATC



Distances from threshold 14	12.4	9.3	6.7	3.8	3.0	2.2	0	THR 14 ELEV 184.3FT
DESCENT GRADIENT 5.76%	RECOMMENDED ALTITUDES							Underlined numbers are AT or ABOVE altitudes
THR RWY 14	9.3	8	6.7	5	3.8	3	2.2	
ALTITUDE	3500 (3316)	3040 (2856)	2580 (2396)	1980 (1796)	1560 (1376)	1280 (1096)	1000 (816)	
CAT ACFT	A	B	C	D	Ground Speed (Kt)			
LNAV/VNAV	690(506)	710(526)	720(536)	730(546)	Rate of Descent			
LNAV	870(686)	870(686)	870(686)	870(686)	90	110	130	150
					180	210	1050	1220

NOTES: Due to the PAPI set at 3.5° for ILS, at times there can be a mismatch for the aircraft on the RNP Z APCH RWY14 since it is a BARO VNAV.

Changes: New Chart

RNP Z RWY14
TABULAR DESCRIPTION

Serial number	Path Descriptor	WPT Identifier	Fly-over	Mag Var	°M	°T	Distance (NM)	Turn direction	Altitude	Speed (kts)	VPA/TCH	NAV Spec
10	IF	MP143	-	-18.38	-	-	-			-210		RNAV1
20	TF	GERUS	N	-18.38	225	207.01	8.28		+3800	-185		RNAV1
10	IF	IMKOV	-	-18.38	-	-	-		+FL060			RNAV1
20	TF	MP142	N	-18.38	144	125.19	8.00					RNAV1
30	TF	GERUS	N	-18.38	144	125.15	5.59		+3800	-185		RNAV1
10	IF	EKBAL	-	-18.38	-	-	-		+FL060			RNAV1
20	TF	MP141	N	-18.38	77	58.71	8.00					RNAV1
30	TF	GERUS	N	-18.38	93	74.22	5.59		+3800	-185		RNAV1
10	IF	GERUS	-	-18.38	-	-	-		+3800	-185		RNP APCH
20	TF	MP100	N	-18.38	135	116.74	3.14		@3500			RNP APCH
30	TF	RW14	Y	-18.38	135	117.12	9.33				-3.3/50	RNP APCH
40	TF	EPNES	Y	-18.38	135	116.91	3.35			-230		RNAV1
50	DF	MP167	N	-18.38	-	-	-	R				RNAV1
60	TF	MP171	N	-18.38	281	263.71	10.7					RNAV1
70	TF	MP161	N	-18.38	301	282.19	5.81					RNAV1
80	TF	EKBAL	N	-18.38	324	305.51	11.65					RNAV1
90	HM	EKBAL	N	-18.38	72	53.54	-	R	+FL060	-230		RNAV1