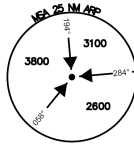


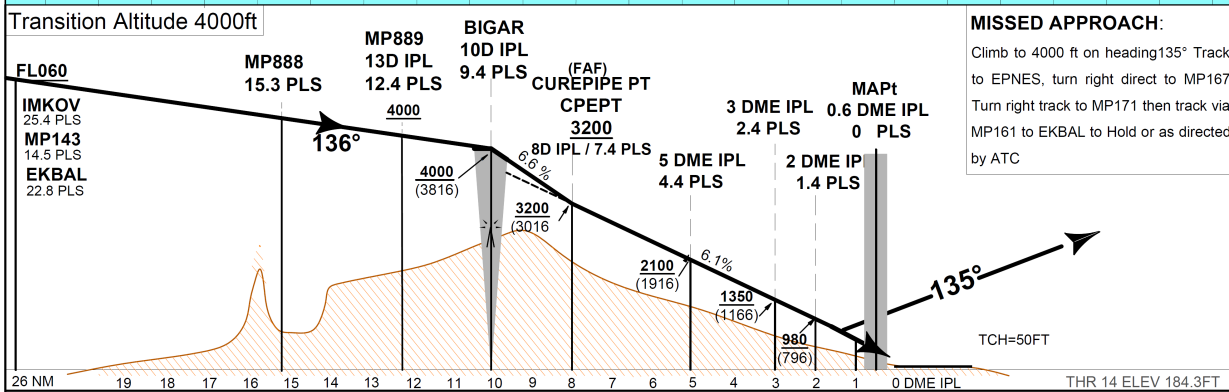
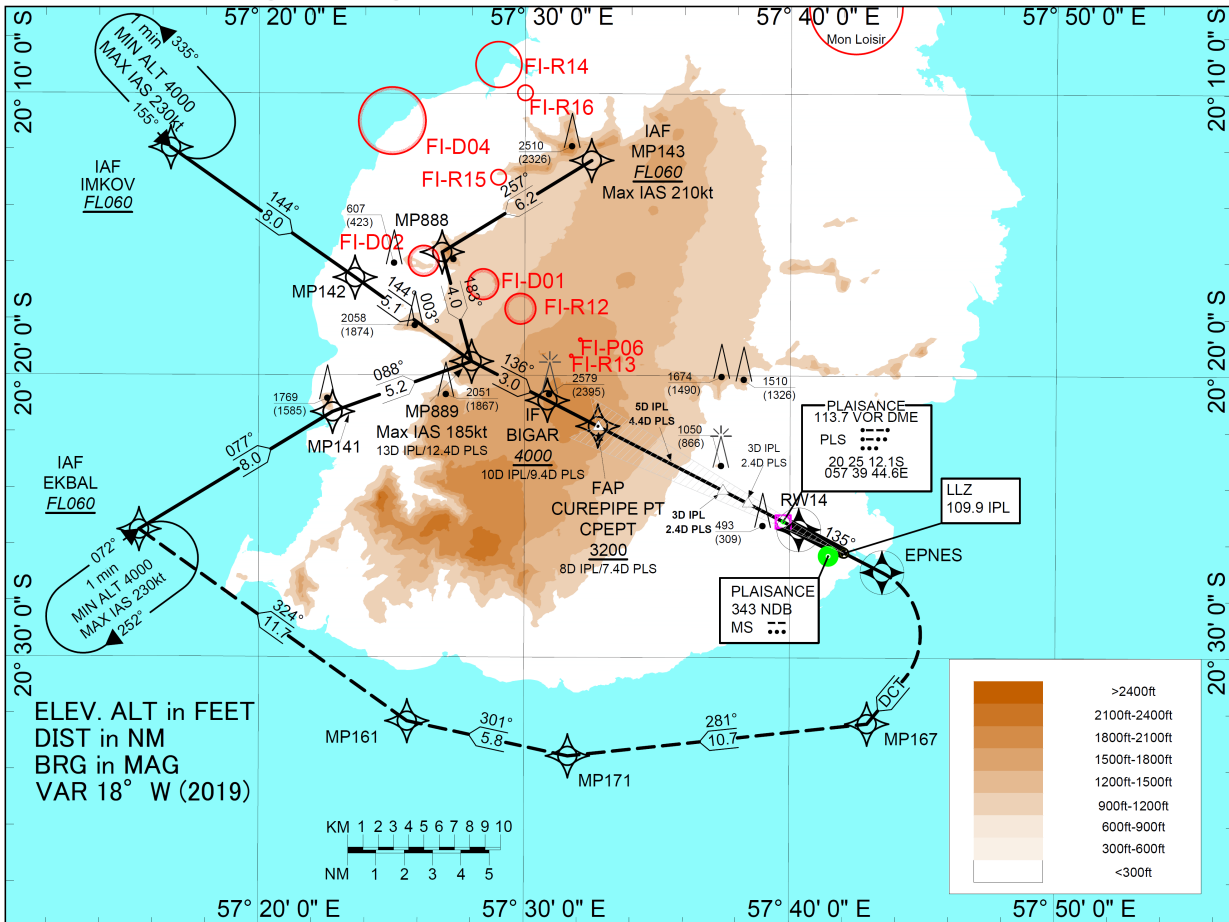
INSTRUMENT APPROACH CHART - ICAO
AD ELEV 184.3FT
HEIGHT RELATED TO THR RWY 14 ELEV 184.3FT



OCA 129.3
APP 119.1
TWR 118.1
ATIS 126.2

MAURITIUS
Sir Seewoosagur Ramgoolam International Airport (FIMP)
RNP1 to LLZ DME IPL Z RWY14
(GP inoperative)

CAT A B C D



MISSED APPROACH:
Climb to 4000 ft on heading 135° Track to EPNES, turn right direct to MP167
Turn right track to MP171 then track via MP161 to EKBAL to Hold or as directed by ATC

DESCENT GRADIENT 6.12%								RECOMMENDED ALTITUDES								Underlined Altitudes are mandatory																																	
DME IPL	8							6							5							4							3							2							1						
DME PLS	7.4							5.4							4.4							3.4							2.4							1.4							0.4						
ALTITUDES	<u>3200</u> (3016)							<u>2460</u> (2276)							<u>2100</u> (1916)							1720 (1536)							<u>1350</u> (1166)							<u>980</u> (796)							610 (426)						
CAT ACFT	A		B		C		D		Ground Speed (Kt)		90		110		130		150		180		210																												
OCA / OCH	860(676)		860(676)		860(676)		860(676)		BIGAR - CPEPT		Rate of Descent		600		730		870		1000		1200		1400																										
									CPEPT - THR14		Rate of Descent		560		680		800		930		1110		1300																										

NOTES: 1. ILS Procedure is inapplicable if both IPL and PLS DME are unserviceable. In case IPL DME failure only, aircraft where DME indicator can display tenth of NM will execute and ILS+PLS DME procedure.
2. VM (C) PROHIBITED NE OF RWY 14/32.

Changes: New Chart

RNP 1 to LLZ DME IPL Z RWY 14

TABULAR DESCRIPTION

Serial number	Path Descriptor	WPT Identifier	Fly-over	Mag Var	°M	°T	Distance (NM)	Turn direction	Altitude	Speed (kts)	VPA/TCH	NAV Spec
10	IF	MP143	-	-18.38	-	-	-		+FL060	-210		RNP 1
20	TF	MP888	N	-18.38	257	238.36	6.20			-210		RNP 1
30	TF	MP889	N	-18.38	183	164.78	4.00			-185		RNP 1
40	TF	BIGAR	N	-18.38	136	117.13	3.02		+4000	-185		RNP 1
10	IF	IMKOV	-	-18.38	-	-	-		+FL060			RNP 1
20	TF	MP142	N	-18.38	144	125.19	8.00					RNP 1
30	TF	MP889	N	-18.38	144	125.74	5.06			-185		RNP 1
40	TF	BIGAR	N	-18.38	136	117.13	3.02		+4000	-185		RNP 1
10	IF	EKBAL	-	-18.38	-	-	-		+FL060			RNP 1
20	TF	MP141	N	-18.38	077	058.71	8.00					RNP 1
30	TF	MP889	N	-18.38	088	070.03	5.23			-185		RNP 1
40	TF	BIGAR	N	-18.38	136	117.13	3.02		+4000	-185		RNP 1
10	IF	BIGAR	-	-18.38	-	-	-		+4000	-185		RNP APCH
20	TF	CPEPT	N	-18.38	136	117.13	1.98		+3200		-3.5/50	RNP APCH
30	TF	RW14	Y	-18.38	136	117.12	8.01				-3.5/50	RNP APCH
40	TF	EPNES	Y	-18.38	135	116.91	3.35			-230		RNAV1
50	DF	MP167	N	-18.38	-	-	-	R				RNAV1
60	TF	MP171	N	-18.38	281	263.71	10.7					RNAV1
70	TF	MP161	N	-18.38	301	282.19	5.81					RNAV1
80	TF	EKBAL	N	-18.38	324	305.51	11.65					RNAV1
90	HM	EKBAL	N	-18.38	72	53.54	-	R	+FL060	-230		RNAV1