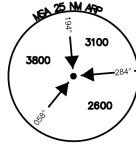


**INSTRUMENT APPROACH CHART - ICAO**  
AD ELEV 184.3FT  
HEIGHT RELATED TO THR RWY 14 ELEV 184.3FT  
**CAT A B C D**

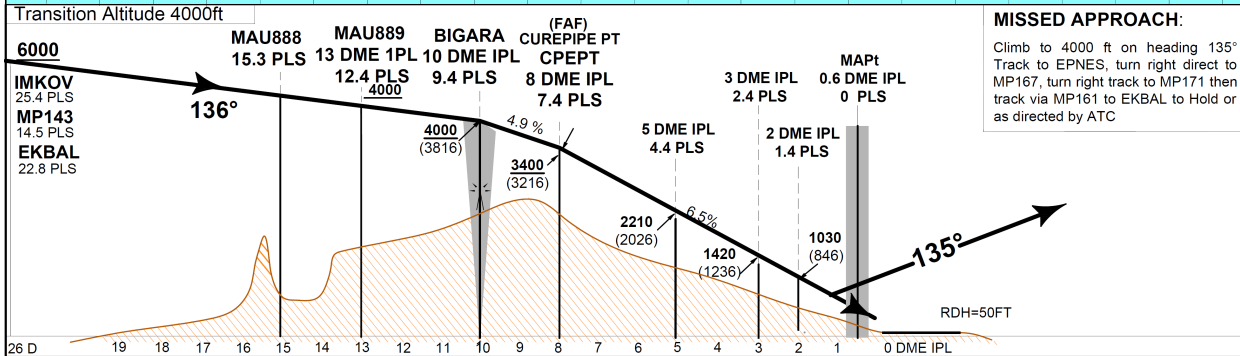
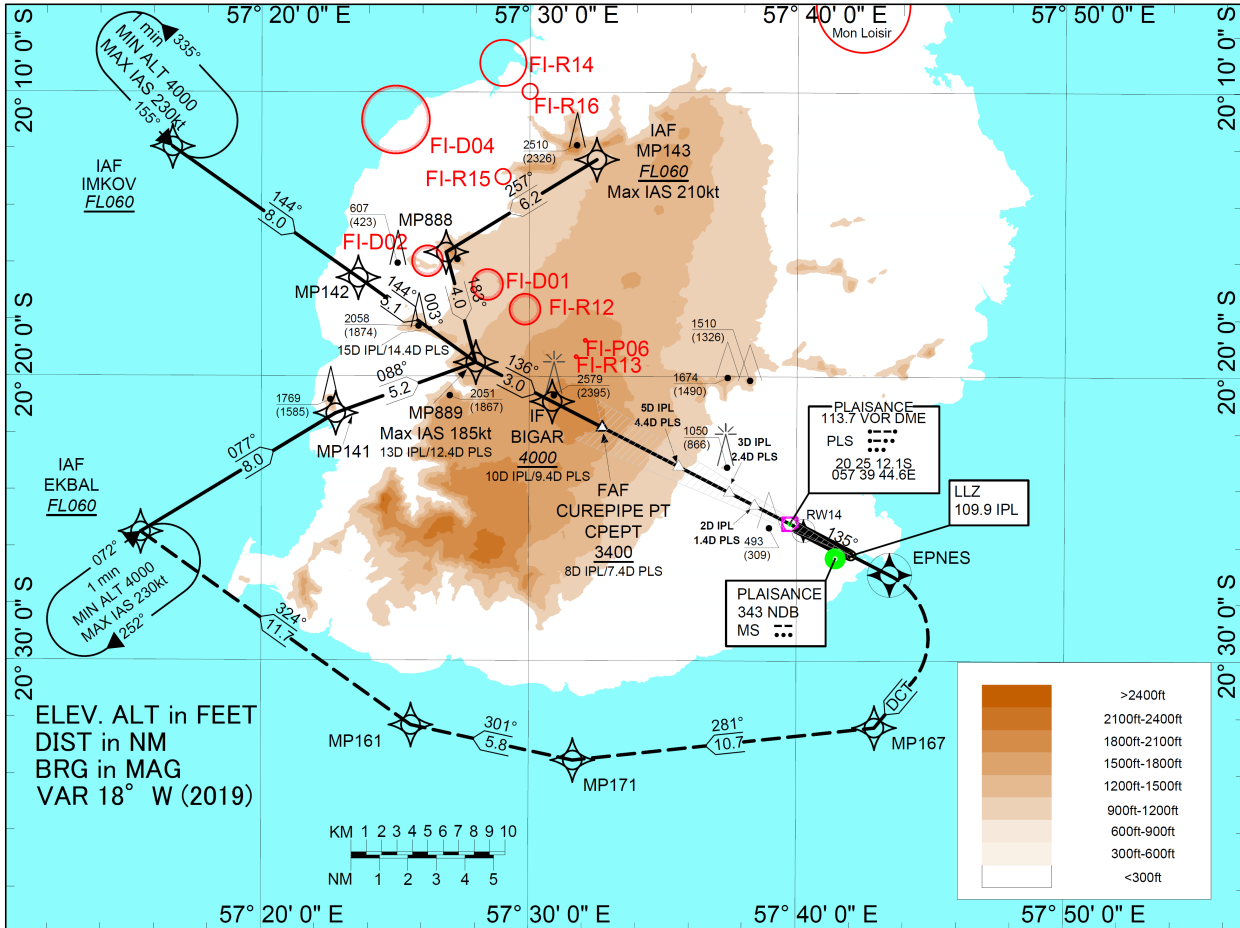


OCA 129.3  
APP 119.1  
TWR 118.1  
ATIS 126.2

**MAURITIUS**

Sir Seewoosagur Ramgoolam International Airport (FIMP)

RNP1 VOR PLS DME IPL Z RWY14



**MISSED APPROACH:**  
Climb to 4000 ft on heading 135°  
Track to EPNES, turn right direct to MP167, turn right track to MP171 then track via MP161 to EKBAL to Hold or as directed by ATC

Distances from threshold 14 which is 0 DME IPL

THR 14 ELEV 183FT

DESCENT GRADIENT 6.5%

	RECOMMENDED ALTITUDES						
	8	6	5	4	3	2	1
DME IPL							
DME PLS	7.4	5.4	4.4	3.4	2.4	1.4	0.4
ALTITUDES	3400 (3216)	2610 (2426)	2210 (2026)	1820 (1636)	1420 (1236)	1030 (846)	630 (446)

CAT ACFT	Ground Speed (Kt)											
	A	B	C	D	90	110	130	150	180	210		
OCA / OCH	860(676)	860(676)	860(676)	860(676)	BIGAR - CPEPT	Rate of Descent	450	550	650	750	900	1050
					CPEPT - THR14	Rate of Descent	593	725	857	969	1187	1384

Notes:  
1. **WARNING**  
VOR PLS indications should be used with integer distances from DME IPL which is paired with ILS (109.9 MHz CH 36X) and gives distances from threshold 14. Decimal Distances from DME PLS (0.6 NM from threshold 14) should only be considered when DME indicator can display tenth of NM.  
2. MAX IAS INITIAL 210KT.  
3. VM (C) PROHIBITED NE OF RWY 14/32 AND BEYOND 3 NM

Changes: New Chart

**RNP1 VOR PLS DME IPL Z RWY 14**  
**TABULAR DESCRIPTION**

Serial number	Path Descriptor	WPT Identifier	Fly-over	Mag Var	°M	°T	Distance (NM)	Turn direction	Altitude	Speed (kts)	VPA/TCH	NAV Spec
10	IF	MP143	-	-18.38	-	-	-		+FL060	-210		RNP 1
20	TF	MP888	N	-18.38	257	238.36	6.20			-210		RNP 1
30	TF	MP889	N	-18.38	183	164.78	4.00			-185		RNP 1
40	TF	BIGAR	N	-18.38	136	117.13	3.02		+4000	-185		RNP 1
10	IF	IMKOV	-	-18.38	-	-	-		+FL060			RNP 1
20	TF	MP142	N	-18.38	144	125.19	8.00					RNP 1
30	TF	MP889	N	-18.38	144	125.74	5.06			-185		RNP 1
40	TF	BIGAR	N	-18.38	136	117.13	3.02		+4000	-185		RNP 1
10	IF	EKBAL	-	-18.38	-	-	-		+FL060			RNP 1
20	TF	MP141	N	-18.38	077	058.71	8.00					RNP 1
30	TF	MP889	N	-18.38	088	070.03	5.23			-185		RNP 1
40	TF	BIGAR	N	-18.38	136	117.13	3.02		+4000	-185		RNP 1
10	IF	BIGAR	-	-18.38	-	-	-		+4000	-185		RNP APCH
20	TF	CPEPT	N	-18.38	136	117.13	1.98		+3400		-3.5/50	RNP APCH
30	TF	RW14	Y	-18.38	136	117.12	8.01				-3.5/50	RNP APCH
40	TF	EPNES	Y	-18.38	135	116.91	3.35			-230		RNAV1
50	DF	MP167	N	-18.38	-	-	-	R				RNAV1
60	TF	MP171	N	-18.38	281	263.71	10.7					RNAV1
70	TF	MP161	N	-18.38	301	282.19	5.81					RNAV1
80	TF	EKBAL	N	-18.38	324	305.51	11.65					RNAV1
90	HM	EKBAL	N	-18.38	72	53.54	-	R	+FL060	-230		RNAV1