

INSTRUMENT APPROACH CHART - ICAO

Aerodrome ELEV 184.3 FT

THR RWY 14 ELEV 184.3 FT

MSA 25 NM VOR

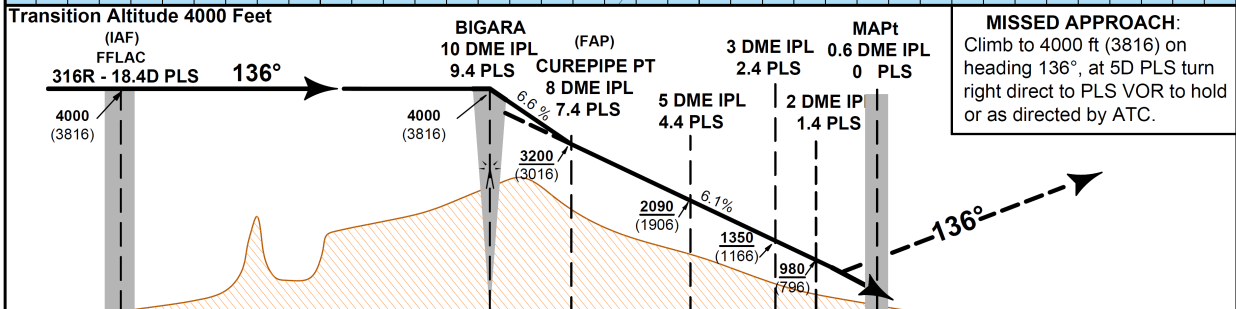
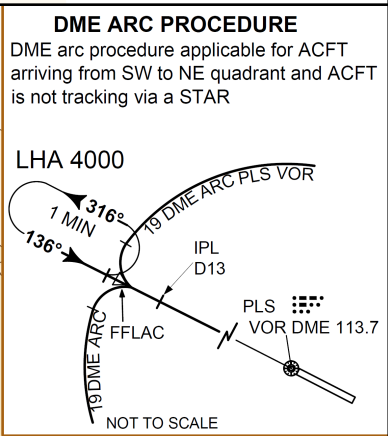
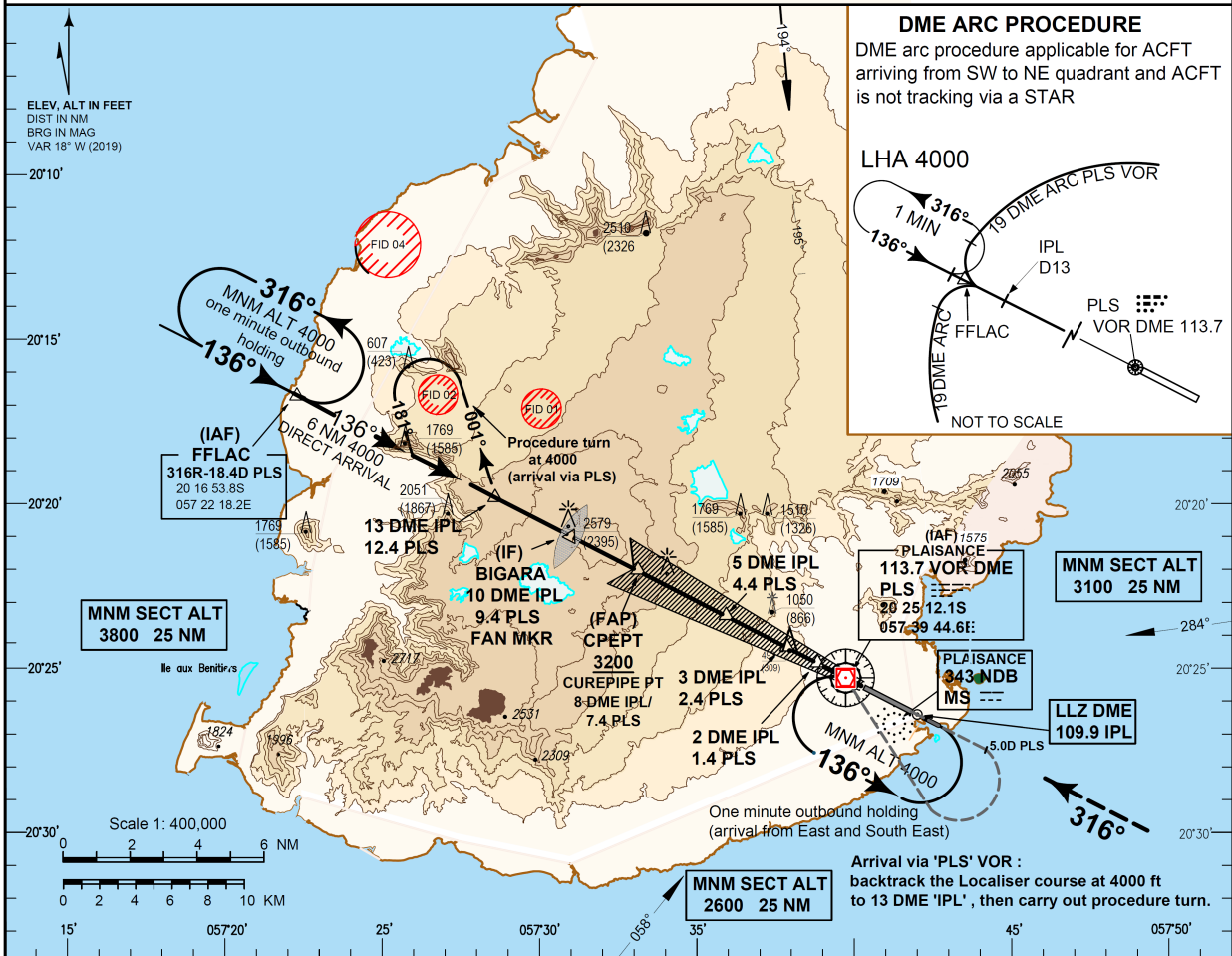
MAURITIUS/

Sir Seewoosagur Ramgoolam International Airport (FIMP)

LLZ DME IPL Y RWY 14

(GP Inoperative)

OCA 129.3	APP 119.1
TWR 118.1	ATIS 126.2



MISSED APPROACH:
Climb to 4000 ft (3816) on heading 136°, at 5D PLS turn right direct to PLS VOR to hold or as directed by ATC.

Distances from threshold 14 which is 0 DME IPL

DESCENT GRADIENT 6.1% as from 8nm	RECOMMENDED ALTITUDES							Underlined altitudes are mandatory								
	IPL DME	8	6	5	4	3	2	1	19.6	18	17	16	15	14		
PLS DME	7.4	5.4	4.4	3.4	2.4	1.4	0.4									
ALTITUDES	<u>3200</u> (3016)	<u>2460</u> (2276)	<u>2090</u> (1906)	<u>1720</u> (1536)	<u>1350</u> (1166)	<u>980</u> (796)	<u>610</u> (426)									
CAT of ACFT	A	B	C	D	Ground Speed (Kt)						90	110	130	150	180	210
OCA /H	860 (676)	860 (676)	860 (676)	860 (676)	Bigara - Curepipe Pt		Rate of descent		600	730	870	1000	1200	1400		
					Curepipe Pt - THR 14		Rate of descent		560	680	800	930	1110	1300		

Notes:

- WARNING**
VOR PLS indications should be used with integer distances from DME IPL which is paired with ILS (109.9 MHz CH 36X) and gives distances from threshold 14. Decimal distances from DME PLS (0.6 NM from threshold 14) should only be considered when DME indicator can display tenth of NM.
- VM (C) PROHIBITED NE OF RWY 14/32.

Changes: Changes: Removal of NDBs FF and MS, DME arcs, holding pattern and new missed approach procedure