

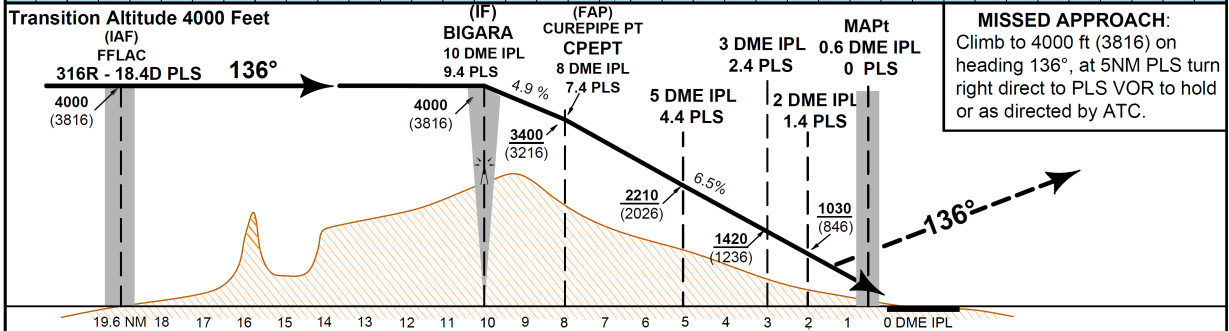
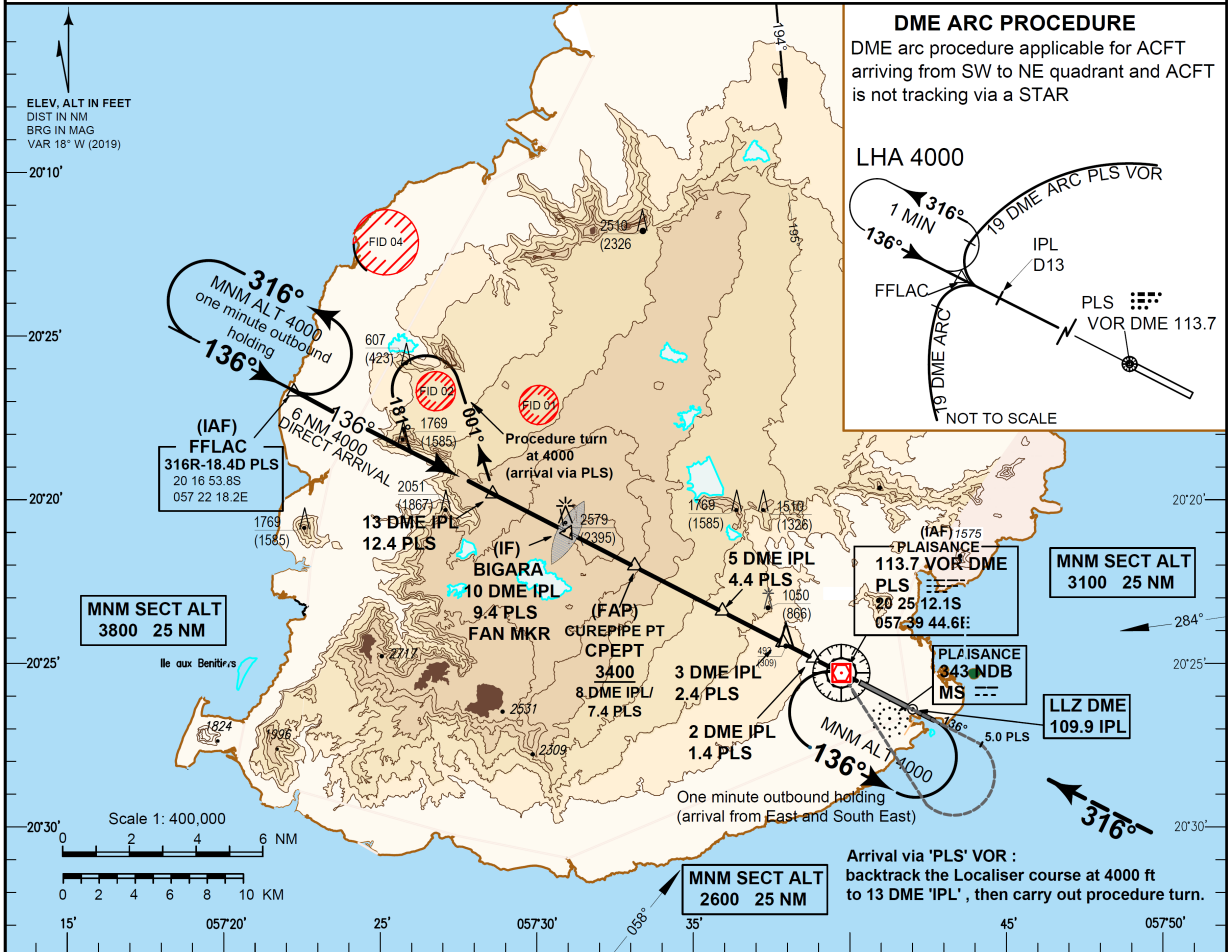
INSTRUMENT APPROACH CHART - ICAO

Aerodrome ELEV 184.3 FT
HEIGHT RELATED TO
THR RWY 14 ELEV 184.3 FT

OCA 129.3
APP 119.1
TWR 118.1
ATIS 126.2

MAURITIUS/
Sir Seewoosagur Ramgoolam
International Airport (FIMP)
VOR PLS DME IPL Y RWY 14

MSA 25 NM VOR



Distances from threshold 14 which is 0 DME IPL

| IPL DME | RECOMMENDED ALTITUDES | | | | | | |
|-----------|-----------------------|-------------|-------------|-------------|-------------|------------|-----------|
| | 8 | 6 | 5 | 4 | 3 | 2 | 1 |
| PLS DME | 7.4 | 5.4 | 4.4 | 3.4 | 2.4 | 1.4 | 0.4 |
| ALTITUDES | 3400 (3216) | 2610 (2426) | 2210 (2026) | 1820 (1636) | 1420 (1236) | 1030 (846) | 630 (446) |

| CAT of ACFT | Ground Speed (Kt) | | | | Bigara - Curepipe Pt | Rate of descent | 90 | 110 | 130 | 150 | 180 | 210 |
|-------------|-------------------|-----------|-----------|-----------|----------------------|-----------------|-----|-----|-----|-----|------|------|
| | A | B | C | D | | | | | | | | |
| OCA /H | 860 (676) | 860 (676) | 860 (676) | 860 (676) | Curepipe Pt - THR14 | Rate of descent | 450 | 550 | 650 | 750 | 900 | 1050 |
| | | | | | | Rate of descent | 583 | 725 | 857 | 969 | 1187 | 1384 |

Notes:
 1. **WARNING**
 VOR PLS indications should be used with integer distances from DME IPL which is paired with ILS (109.9 MHz CH 36X) and gives distances from threshold 14. Decimal distances from DME PLS (0.6 NM from threshold 14) should only be considered when DME indicator can display tenth of NM.
 2. MAX IAS INITIAL 210KT.
 3. VM (C) PROHIBITED NE OF RWY 14/32.

Changes: Changes: Removal of NDBs FF and MS, DME arcs, holding pattern and new missed approach procedure